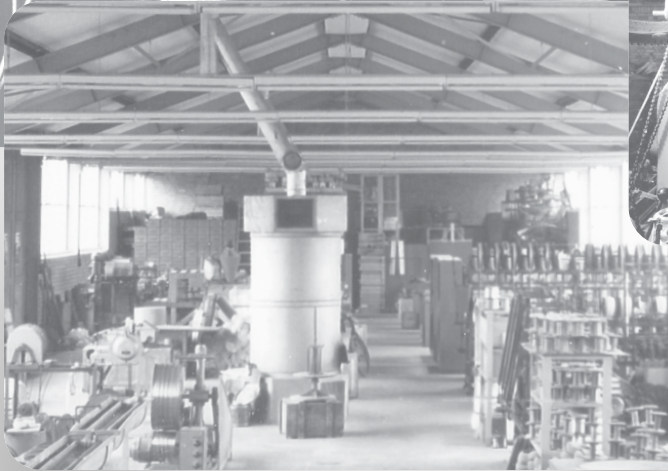
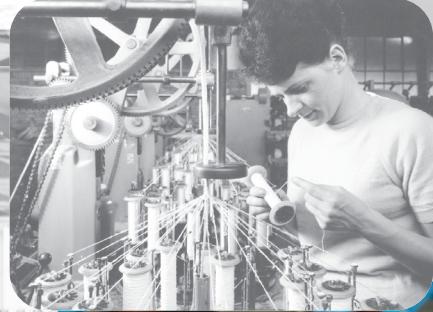


# HARNESSED PUSH PULL CABLES





TRADITIONAL  
FAMILY BUSINESS  
SINCE 1947

# WHO WE ARE

## A SURVEY

**75** years of experience in cable and wire manufacturing as well as in temperature measurement technology turned a one-man business into a company with more than 550 employees. We prove our strength every year with more than 1500 special products according to customers' requirements. Each product is a new challenge for our creative technical team. We at **SAB** see ourselves as a manufacturer and a service provider – in the sense of true partnership and the greatest possible customer orientation.

Today, the quality of our products is known and appreciated in more than 80 countries around the world. In all product ranges, we are certified according to DIN EN ISO 9001. Furthermore, we have implemented an environmental management system for our company according to DIN EN ISO 14001, an occupational health and safety management system according to DIN EN ISO 14001 and DIN ISO 45001, and an energy management system according to DIN EN ISO 50001.

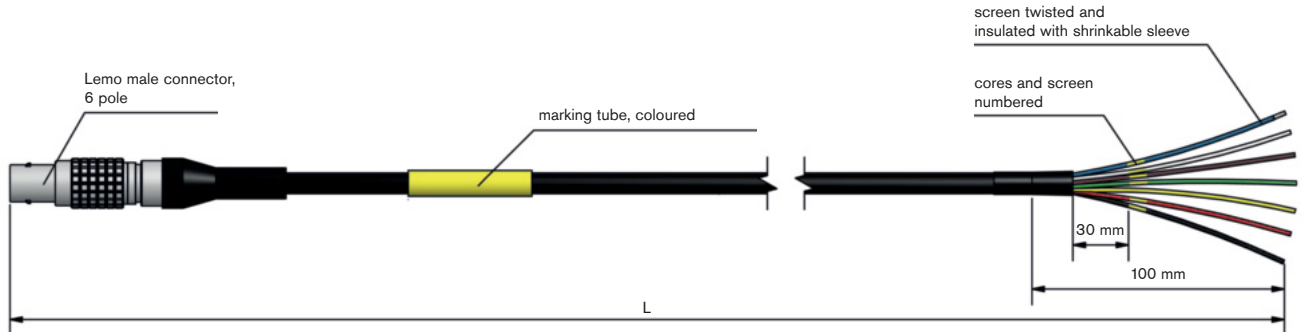
And also for the future, our slogan is: **"WE CONTINUE!"**

FOUNDED:	1947 by Peter Bröckskes sen. an independent, medium-sized company.
CEO:	Peter Bröckskes and Sabine Bröckskes-Wetten
PLANT/LOCATION:	In Viersen (Lower Rhine) 110.000 m <sup>2</sup> company site.  Own manufacturing from copper conductor to outer sheath.  VDE proved burnchamber and laboratory within the company.
EMPLOYEES/WORKERS:	Approx. 430 at the plant in Viersen, 550 worldwide
YEARLY SALES:	Approx. 95 Mio. € worldwide
PRODUCTS:	Special Cables  Measurement Technology  Cable Harnessing
CERTIFICATES AND APPROVALS:	Quality management system acc. to DIN EN ISO 9001 for every manufacturing field  Environmental management system acc. to DIN EN ISO 14001  Occupational health and safety management acc. to NLF/ILO-OSH and DIN ISO 45001  Energy management system acc. to DIN EN ISO 50001



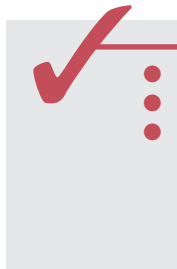
## SENSOR CABLE

with 6 pole Lemo male connector and stripped end



### Application:

sensor cable, open ends



### Cable characteristics:

- mechanically very rugged
- very flexible
- +125 °C / 2500h

### Cable data:

Construction:	7 x AWG26
Insulation:	TPFK
Screen:	overall screen >80%
Outer sheath:	PUR 420, colour black, mat surface
Outer diameter:	approx. 4,3 mm
Min. bending radius:	10 x d
Peak operating voltage:	max. 350 V
Temperature range:	-40/+90 °C (+125 °C / 2500h)
Oil resistance:	very good – TMPU acc. to EN50363-10-2

### Configuration example:

item no.	length „L“ in cm
S3833-4080-00050	50

### Connector:

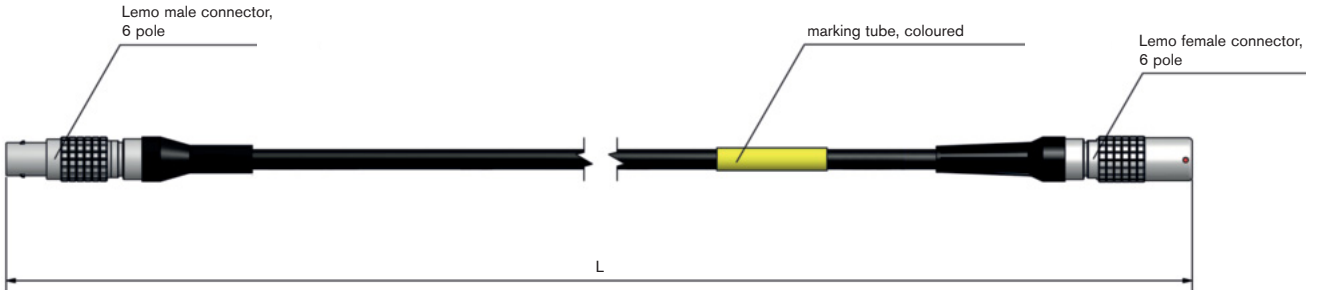
side 1:	Lemo male connector, 6 pole
side 2:	stripped end

### SAB marking:

item number, order number, length

## SENSOR CABLE

with 6 pole Lemo male and female connector



### Application:

sensor extension cable



### Cable characteristics:

- mechanically very rugged
- very flexible
- +125 °C / 2500h

### Cable data:

Construction:	7 x AWG26
Insulation:	TPFK
Screen:	overall screen >80%
Outer sheath:	PUR 420, colour black, mat surface
Outer diameter:	approx. 4,3 mm
Min. bending radius:	10 x d
Peak operating voltage:	max. 350 V
Temperature range:	-40/+90 °C (+125 °C / 2500h)
Oil resistance:	very good – TMPU acc. to EN50363-10-2

### Configuration example:

item no.	length „L“ in cm
S3833-4291-00100	100

### Connector:

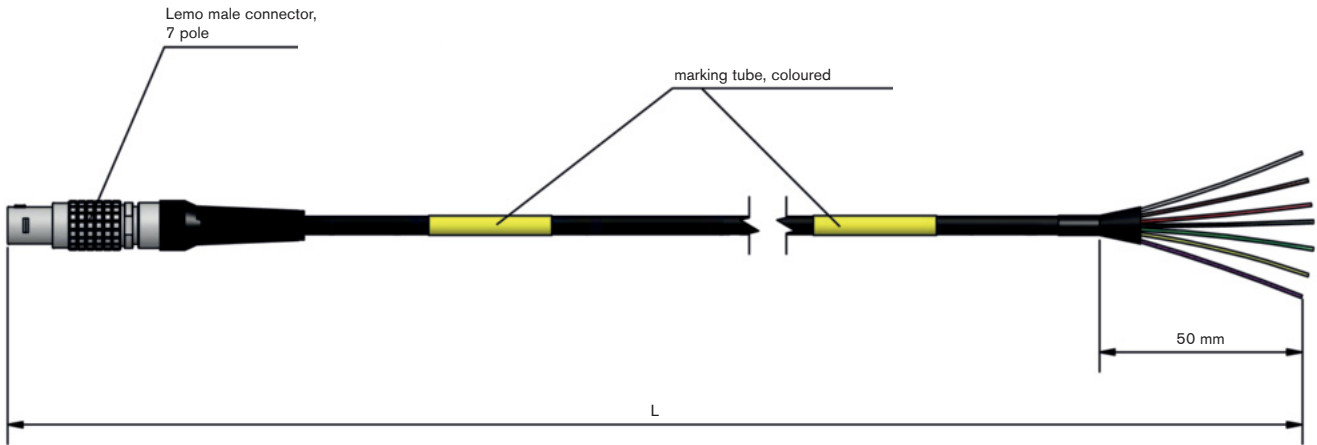
side 1:	Lemo male connector, 6 pole
side 2:	Lemo female connector, 6 pole

### SAB marking:

item number, order number, length

## SENSOR CABLE

with 7 pole Lemo male connector and stripped end



### Application:

cable for strain gauges

**Cable characteristics:**

- mechanically very rugged
- very flexible
- +125 °C / 2500h

### Cable data:

Construction:	7 x AWG26
Insulation:	TPFK
Screen:	overall screen >80%
Outer sheath:	PUR 420, colour black, mat surface
Outer diameter:	approx. 4,3 mm
Min. bending radius:	10 x d
Peak operating voltage:	max. 350 V
Temperature range:	-40/+90 °C (+125 °C / 2500h)
Oil resistance:	very good – TMPU acc. to EN50363-10-2

### Configuration example:

item no.	length „L“ in cm
S3833-4329-00600	600

### Connector:

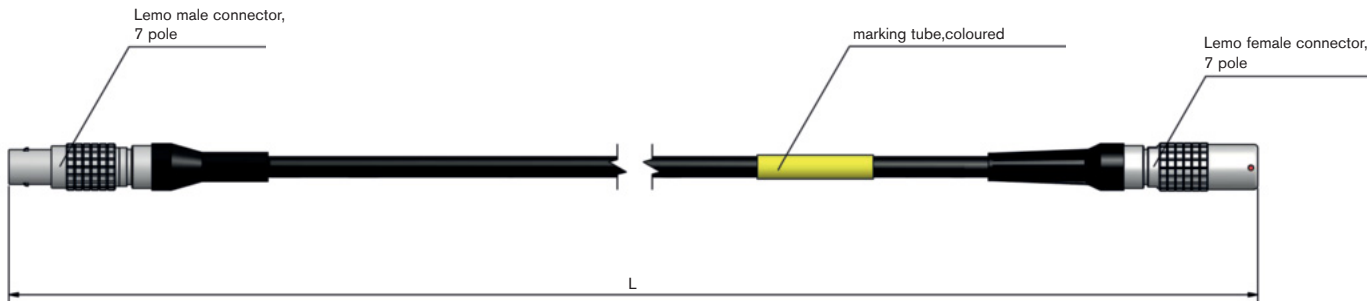
side 1:	Lemo male connector, 7 pole
side 2:	stripped end

### SAB marking:

item number, order number, length

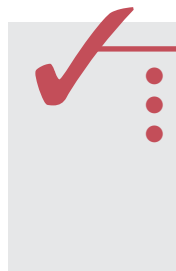
## SENSOR CABLE

with 7 pole Lemo male and female connector



### Application:

extension cable for strain gauges



### Cable characteristics:

- mechanically very rugged
- very flexible
- +125 °C / 2500h

### Cable data:

Construction:	7 x AWG26
Insulation:	TPFK
Screen:	overall screen >80%
Outer sheath:	PUR 420, colour black, mat surface
Outer diameter:	approx. 4,3 mm
Min. bending radius:	10 x d
Peak operating voltage:	max. 350 V
Temperature range:	-40/+90 °C (+125 °C / 2500h)
Oil resistance:	very good – TMPU acc. to EN50363-10-2

### Configuration example:

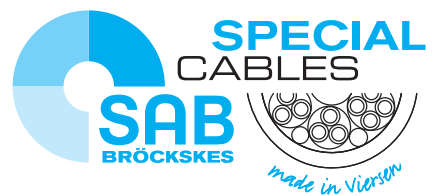
item no.	length „L“ in cm
S3833-4534-00700	700

### Connector:

side 1:	Lemo male connector, 7 pole
side 2:	Lemo female connector, 7 pole

### SAB marking:

item number, order number, length



**SAB BRÖCKSKES GMBH & CO. KG**  
GREFRATHER STR. 204 - 212 B  
41749 VIERSEN · GERMANY  
TEL.: +49/2162/898-0  
FAX: +49/2162/898-101  
[WWW.SAB-WORLDWIDE.COM](http://WWW.SAB-WORLDWIDE.COM)  
[INFO@SAB-BROECKSKES.DE](mailto:INFO@SAB-BROECKSKES.DE)